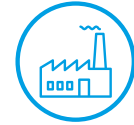


EI-MV66SS/MV33SS

SOFT STARTER

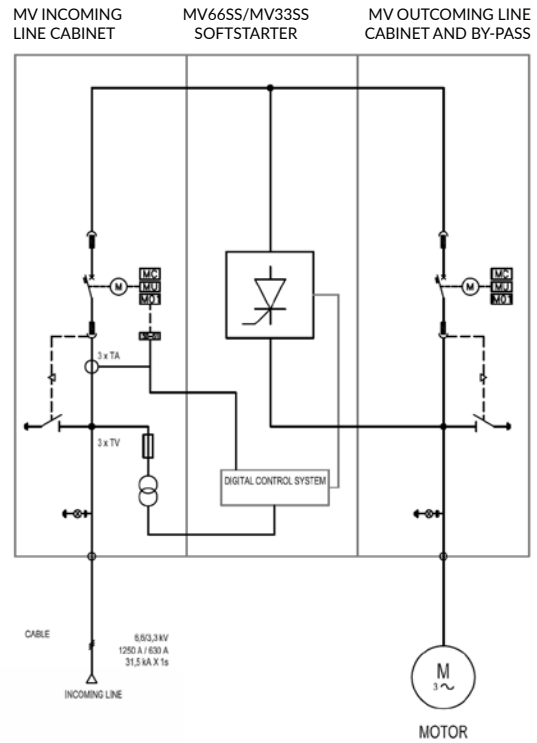
FOR MEDIUM VOLTAGE APPLICATIONS



EI-MV66SS/MV33SS medium voltage Soft Starter are an integrated solution for motors control and protection. MV66SS/MV33SS soft starters combine advance soft start and extensive motor and system protection, plus a user-friendly interface and complete commissioning diagnostic.

MAIN FEATURES:

- Designed with SCR power circuit to ensure high reliability.
- Extended lifetime and easy accessibility and maintenance with its modularity system.
- Digital management of control parameters, alarm diagnostic, analogue and digital I/O signals from dedicated microcontroller.



MODULAR

Easy accessibility and maintenance with its modularity concept



ADVANCED

Flexible software configuration allow wide functionalities



RELIABLE

Equipped with latest power technology and consolidated design with more than 40 years of experience



MODEL	MV33SS1000	MV33SS500	MV33SS70
GENERAL ELECTRICAL SPECIFICATIONS			
System Architecture		Thyristor bridge	
Rated Input Voltage	3,3 kV ± 10%	3,3 kV ± 10%	3,3 kV ± 10%
Rated Input Frequency	50/60 Hz	50/60 Hz	50/60 Hz
Withstand short circuit current	31 kA x 1s	31 kA x 1s	31 kA x 1s
Inline vacuum circuit breaker	1250 A	630 A	630 A
Bypass	CB 1250 A	CB 630 A	Contactora
Grounding	TN or TT	TN or TT	TN or TT
Rated Motor current In	1000 A	500 A	70 A
Overload	600 % In X 30 s		
Auxiliaries	Auxiliary voltage: 400 VAC 3ph (*) - 3 kVA / Signal Circuit: 24 VDC		
Other	Electronic Boards tropicalized		
ENVIRONMENTAL CONDITIONS			
Operating temperature	+5°C ÷ +40 °C	+5°C ÷ +40 °C	+5°C ÷ +40 °C
Storage temperature	-10 °C ÷ +50 °C	-10 °C ÷ +50 °C	-10 °C ÷ +50 °C
Relative Humidity	90% @ 20°C no condensing	90% @ 20°C no condensing	90% @ 20°C no condensing
Altitude	< 1000 m a.s.l.	< 1000 m a.s.l.	< 1000 m a.s.l.
Protection Degree	IP 4X(*)	IP 4X(*)	IP 4X(*)
Cooling method	Air cooling	Air cooling	Air cooling
COMMUNICATION			
HMI	7" Touch panel with data logger		
Communication interfaces	CAN Bus and RS485 built in communication Ethernet connection through Modbus TCP or web server available as an option. Front door operator interface.		
PROTECTIONS			
Self-diagnostic	Over current, Short circuit, Ground Fault, Phase loss detection, Over Voltage, Under Voltage, Over temperature. Others upon request.		
Function standard*	50-51	50-51	50-51
SIZE AND WEIGHT			
Approx. dimensions	3000 X 1800 X 2780 L x P x H (mm) Included top mounted cooling fans		1500 X 1800 X 2780 L x P x H (mm)
Weight	≈ 2900 kg	≈ 2900 kg	≈ 2000 kg

(*) Other standard on request

MODEL	MV66SS1000	MV66SS500	MV66SS70
GENERAL ELECTRICAL SPECIFICATIONS			
System Architecture		Thyristor bridge	
Rated Input Voltage	6,6 kV ± 10%	6,6 kV ± 10%	6,6 kV ± 10%
Rated Input Frequency	50/60 Hz	50/60 Hz	50/60 Hz
Withstand short circuit current	31 kA x 1s	31 kA x 1s	31 kA x 1s
Inline vacuum circuit breaker	1250 A	630 A	630 A
Bypass	CB 1250 A	CB 630 A	Contactors
Grounding	TN or TT	TN or TT	TN or TT
Rated Motor current In	1000 A	500 A	70 A
Overload		600 % In X 30 s	
Auxiliaries	Auxiliary voltage: 400 VAC 3ph (*) – 3 kVA / Signal Circuit: 24 VDC		
Other	Electronic Boards tropicalized		
ENVIRONMENTAL CONDITIONS			
Operating temperature	+5°C ÷ +40 °C	+5°C ÷ +40 °C	+5°C ÷ +40 °C
Storage temperature	-10 °C ÷ +50 °C	-10 °C ÷ +50 °C	-10 °C ÷ +50 °C
Relative Humidity	90% @ 20°C no condensing	90% @ 20°C no condensing	90% @ 20°C no condensing
Altitude	< 1000 m a.s.l.	< 1000 m a.s.l.	< 1000 m a.s.l.
Protection Degree	IP 4X(*)	IP 4X(*)	IP 4X(*)
Cooling method	Air cooling	Air cooling	Air cooling
COMMUNICATION			
HMI	7" Touch panel with data logger		
Communication interfaces	CAN Bus and RS485 built in communication Ethernet connection through Modbus TCP or web server available as an option. Front door operator interface.		
PROTECTIONS			
Self-diagnostic	Over current, Short circuit, Ground Fault, Phase loss detection, Over Voltage, Under Voltage, Over temperature. Others upon request.		
Function standard*	50-51	50-51	50-51
SIZE AND WEIGHT			
Approx. dimensions	3000 X 1800 X 2780 L x P x H (mm) Included top mounted cooling fans		1500 X 1800 X 2780 L x P x H (mm)
Weight	≈ 2900 kg	≈ 2900 kg	≈ 2000 kg

(*) Other standard on request